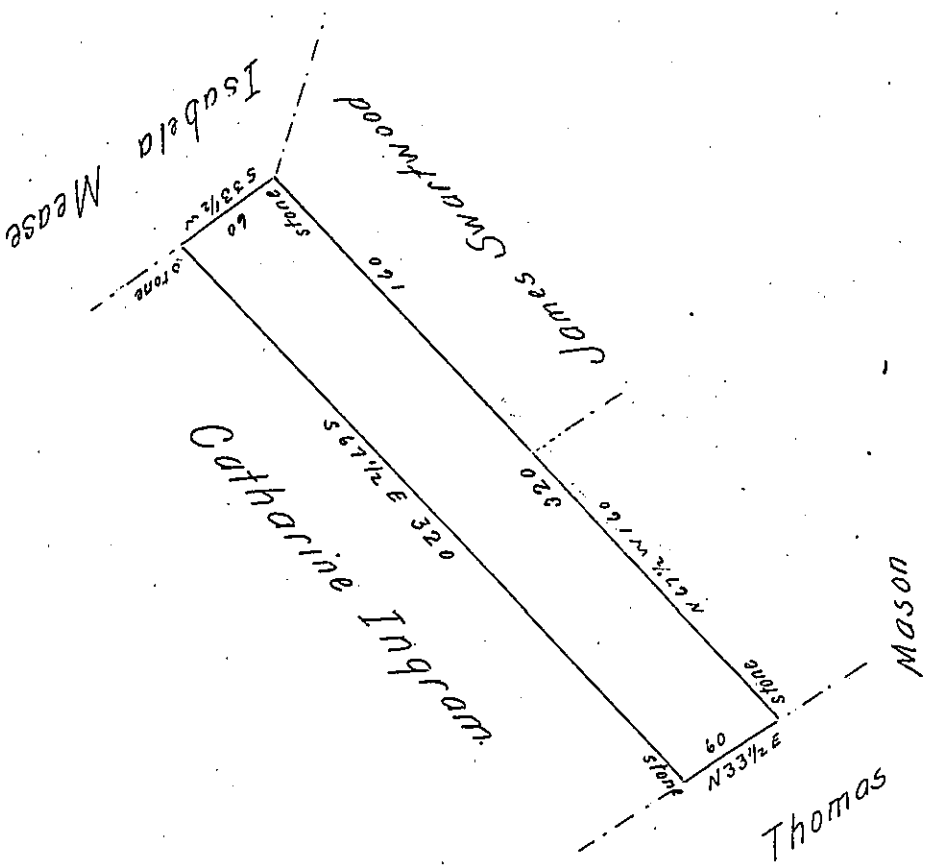


Del. - PIKE. ✓



By Virtue of a Warrant dated the 13th day of February 1860.
 Surveyed the 20th day of February 1860 to Margaret Gilmore
 the above described tract of Land Situate in Delaware Township
 in the County of Pike. Adjoining lands Surveyed to Thomas Mason
 and Others. Containing One hundred and Eleven Acres and twenty
 One perches and the allowance of Six per Cent for Roads &c.

To John Rowe Esquire } W^m C. McCarty D. S.
 Surveyor General of Pa }

IN TESTIMONY that the above is a copy of the original remaining on file in
 the Department of Internal Affairs of Pennsylvania, made
 conformably to an Act of Assembly approved the 16th day of
 February, 1833, I have hereunto set my Hand and caused
 the Seal of said Department to be affixed at Harrisburg,
 this seventeenth day of January 1905.

George R. Brown
 Secretary of Internal Affairs.